

ANNUAL HIGHLIGHTS

2023



GLOBAL THINK TANK

Foreword



Director

Dr. Elisabeth Rianawati

In 2024, we commemorate 18 years since the establishment of the Resilience Development Initiative as one of the preeminent research institution in Southeast Asia. Our mission revolves around advancing research in resilience and development studies at local, regional, and international levels. With more than 50 partnerships involving government institutions, international organisations, NGOs, and fellow think tanks, we have emerged as a prominent force concentrating on sustainable development and resilience studies.

Over the past year, we have engaged in a diverse array of activities, successfully achieving significant milestones. These accomplishments serve as evidence of our expertise and unwavering commitment to excellence in consultancy and research. As of the beginning of 2024, we have collaborated on more than 46 projects with notable global organisations. Our project and research has covered various emerging and pertinent topics, including disaster risk reduction, climate displacement, global health, sustainable financing, clean and equitable energy transitions, waste management, public transportation, gender and social inclusion, and social protection.

As we reflect on 2023 we are thrilled to announce the expansion of our global networks. In the previous year, we extended our reach overseas, establishing meaningful connections in Indonesia, Vietnam, Cambodia, the Philippines, Thailand, the United Kingdom, Australia, and Canada. Through visits to over 20 institutions, we have fostered valuable connections and collaborations for upcoming sustainable and resilient projects. Collaborations were initiated with institutions such as PT MRT Jakarta, Tani Kota, LATUN, University of the Philippines Los Baños, The Ho Chi Minh City University of Social Sciences and Humanities, the University of Toronto, and the University of Queensland, among others.

On behalf of RDI, I express gratitude to the advisory board, researchers, fellows, associates, organisational partners, and the RDI team for their steadfast support and contributions. We eagerly look forward to expanding our collaborative efforts with the government, NGOs, think tanks, and the private sector to enhance resilience and sustainability globally.

Warm Regards

Dr. Elisabeth Rianawati

Table of Contents

03	<u>Foreword</u>	08	<u>Key Moments</u>
04	<u>Table of Contents</u>	12	<u>Maps of our Activity 2023</u>
05	<u>A Glance at RDI Cluster & Center</u>	13	<u>Achievements</u>
06	<u>RDI Round-up 2023</u>	18	<u>RDI Knowledge Hub</u>
07	<u>RDI in Numbers</u>	20	<u>Social Media Report</u>

A Glance at RDI

Resilience Development Initiative is a research institution that promotes sustainable development and resilience-building efforts in communities facing challenges such as disaster, climate change, urban development issues, waste and pollution, clean energy development challenges, and social vulnerabilities. We collaborate with various stakeholders, including government agencies, NGOs, academic institutions, and community organisations, to design and implement innovative solutions for building resilience and mitigating risks.

Cluster & Center

We have seven research clusters, four established centers, and one center launched in 2024, focusing on pivotal areas in sustainable development and resilience studies. These clusters and centres comprise a diverse team of experts and researchers spanning various disciplines, including social, economic, environmental, and cultural studies. Beyond their research functions, these clusters and centres serve as dynamic platforms for idea exchange, research exploration, and the promotion of robust collaborations with external organisations and communities.



Disaster and
Climate Resilience



Regional and
Urban Planning



Tourism and
Cultural Heritage



Water and Waste
Management



Children, Social
Welfare and Health



Renewable Energy
and Emission
Reduction



Finance and
Business
Management



Smart System Center



CEGF

Center of Environment
and Global Financing



PACE

Policy Advocacy and Community
Empowerment



EAFOR

Environment, Agriculture,
and Forestry Resilience

RDI Round-up 2023

Our services cover research, consultation, advocacy, monitoring evaluation, workshops, academic publications, seminars and webinars, and training and capacity-building programs.



Research



Consultation



Advocacy



Monitoring &
Evaluation



Research
Publications



Internship &
Visiting Scholar



Web/Seminar



Capacity
Building
Training



Workshop

RDI in Numbers

This year saw RDI Implement

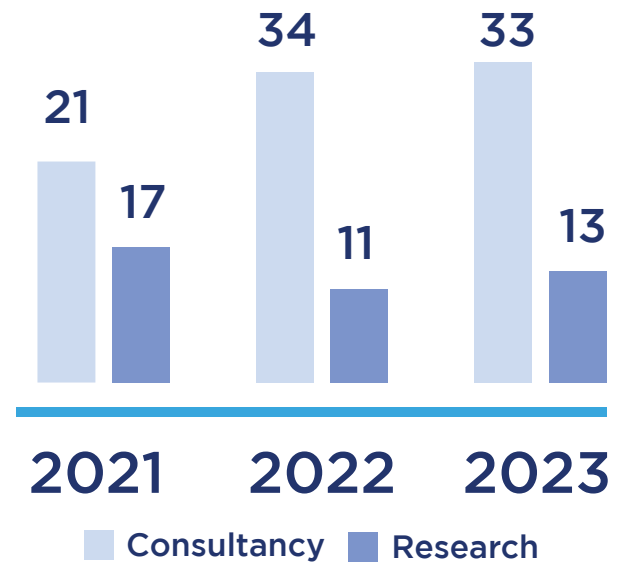
13

Research
Projects

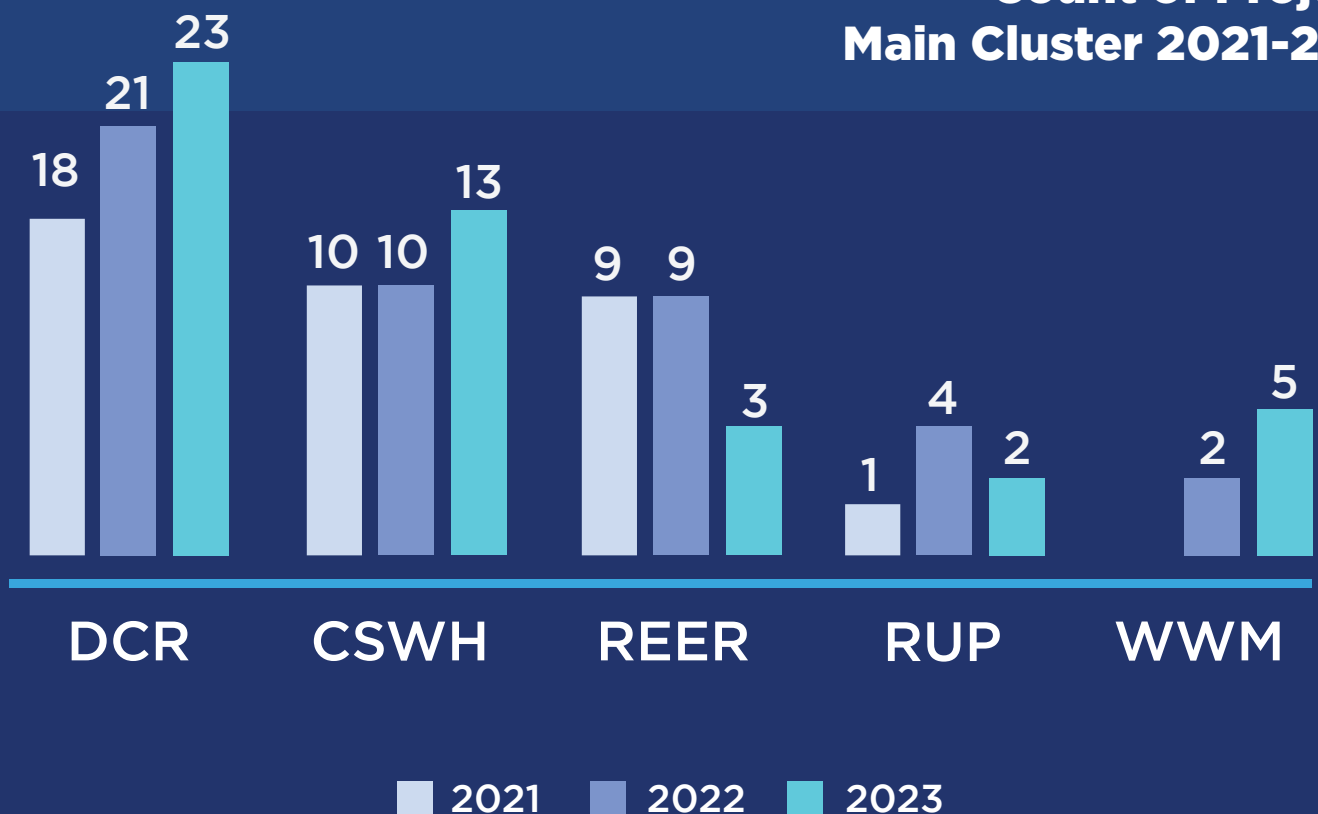
32

Consultancy
Projects

Number of Projects Implemented 2021-2023



Count of Projects Main Cluster 2021-2023



Events

11



Guest Lecture
and Webinar

11



Training and
Capacity Building

13



Workshop

6



Seminar and
Conference

3



Campaign

2



Competition

Publications

3

Academic
Publication

8

Policy
Brief

3

Proceeding
Series

2

Popular
Publication

5

Report

16

Op-Ed

Visit our website to
check the publications

<https://rdi.or.id/>



Key Moments

Indonesia ASEAN Chairmanship 2023 Side-event Seminar on Disaster Risk Financing and Adaptive Social Protection Implementation in Indonesia

To strengthen and support the Indonesia ASEAN Chairmanship 2023, we collaborated with the Indonesian Ministry of Finance and UNICEF Indonesia, organising the side-event seminar on the ASEAN Finance and Central Bank Deputies Meeting Working Group in July 2023 in Yogyakarta. The event is proposed to discuss Indonesia's advancements in Disaster Risk Financing (DRFI) and Adaptive Social Protection (ASP) implementation and to explore potential synergies between these approaches, particularly in enhancing the resilience of vulnerable groups.



The ASEAN Standards and Certification for Experts in Disaster Management (ASCEND)

Furthering our contribution to resilience and sustainability studies in Southeast Asia, we supported in the development of an ASEAN-level certification for disaster management experts. We continued our collaboration with The ASEAN Coordinating Centre for Humanitarian Assistance on Disaster Management (AHA Centre) to develop the ASCEND Program. This year, we held workshops in Cebu, Philippines, and Ho Chi Minh, Viet Nam, to shape the new framework and competency standards and develop the sustainability strategy for the ASCEND Programme.



RDFact: Optimisation of Refuse-derived Fuels to Decarbonise Energy Sector and Achieve NDC Targets in Indonesia

To mainstream the decarbonisation of Indonesia's energy sector and waste fuel optimisation to meet the Nationally Determined Contribution (NDC) target, we have been working on the RDFact project, collaborating with BRIN and the University of Queensland. The project will carry out a series of activities over a four-year period, including workshops, capacity building, training, FGDs, and study tours involving key stakeholders in the waste and energy sectors.



The targeted stakeholders include those from the private sector, non-profit organisations, research institutions, academia, government institutions, financial institutions, and community organisations at the grassroots level.



In 2023, we kicked off the RDFact project and followed by other 3 Capacity Buildings on Climate and Carbon Literacy (June 2023), Technical Risk Assistance and Study Tour (September 2023), and Life Cycle Assessment and Circular Economy (October 2023). We will continue the RDFact programs this year with more capacity buildings and study tours in Indonesia and Australia to support the implementation of the decarbonization of energy sector in Indonesia.

Urban Study Foundation (USF) Conference 2023: Overlooked Cities in Asia

In collaboration with the Urban Studies Foundation (USF), the University of the Free State (UFS), Renmin University of China, the London School of Economics and Political Science (LSE), The Saw Swee Hock Southeast Asia Centre (SEAC), and Durham University, we conducted the "Overlooked Cities in Asia: Interrogating Blind Fields in Urban Knowledge and Praxes" Conference Program in September 2023. The conference encompassed plenary and presentation sessions, film screenings, art exhibitions, and Early Career Researcher (ECR) Mentoring and Workshops. The Overlooked Cities initiative contributes to the evolving field of urban studies and geography by critically examining "overlooked cities" as a collective critique. It expands on the praxis of counter-overlooking, fostering renewed discussions about urban lives and assessing how these cities occupy distinctive positions within various urban and knowledge hierarchies.



Supporting the Jakarta Air Quality Monitoring Project

In order to develop an air quality monitoring analysis, we collaborated with C40 Cities and DKI Jakarta's Environmental Agency (DLH DKI Jakarta) to develop the Project on Jakarta Air Quality Monitoring. RDI played a pivotal role in organising workshops and capacity-building as part of the project.

This involvement encompassed active participation in Jakarta's Government Working Unit Meeting, developing the Low-cost Sensor Implementation Protocol, and successfully conducting the "AQUA Tool & Transport" Module Training.



Training on Managing Risk in the Face of Climate Change (MRFCC)

The research training was conducted twice in 2023. We collaborated with the National Disaster Management Agency of Indonesia (BNPB), the Wageningen Centre for Development Innovation (WCID), and the Asian Disaster Preparedness Center (ADPC) to conduct this comprehensive training program. The program was created to enhance the capacity of the participants from different countries on climate change mitigation strategies and their implications for Indonesian communities.



Conducted in various regions, including Jakarta, Subang, and Indramayu, with a specific emphasis on the Kandanghaur District, the training sessions observed socio-economic adaptations and disaster risk mitigation measures in response to frequent tidal floods.



New Center: The Environment, Agriculture and Forestry Resilience Center (EAFOR)



As a part of our commitment to foster resilience ecosystem across sector and landscape, we established the Center for Environment, Agriculture, and Forestry Resilience (EAFOR) this year. It stands as a vanguard of environmental stewardship and is rooted in the understanding that our environment is interconnected with the well-being of human societies.



Map of Our Activity

Area Coverage in 2023



Global & ASEAN

Indonesia

- Aceh
- Bali
- Banten
- Banjarmasin
- Bengkulu
- Bima
- Cilegon
- Demak
- DKI Jakarta
- DI Yogyakarta
- Garut
- Gorontalo
- Indramayu
- West Java
- East Java
- East Kalimantan
- Lampung
- East Lombok
- East Luwu
- North Luwu
- Manado
- Makassar
- Malang
- Maluku
- Medan
- NTB
- NTT
- Papua
- Semarang
- West Sumatera
- North Sumatera
- East Sumba
- South Sulawesi
- Southeast Sulawesi
- North Sulawesi
- Surabaya
- Takalar
- Tangerang

Achievements

Throughout the year 2023, we have undertaken a myriad of projects, successfully concluding various significant milestones. We also achieved a noteworthy milestone in the current year by producing and releasing 33 publications across various formats, including journal articles, op-eds, book chapters, policy briefs, white papers, proceedings, and reports. These outcomes stand as a testament to expertise and commitment to excellence in research and consultancy.



Adaptive Social Protection (ASP) and Disaster Risk Financing and Insurance (DRFI)

To facilitate the development and implementation of ASP in Indonesia, we collaborated with several stakeholders developing strategies to anticipate the forthcoming Presidential Regulation on Social Protection Reform. Furthermore, Indonesia's ASP development also requires mapping of social protection landscape and devising a financing strategy to support the program. The strategy is also being integrated into the Disaster Risk Financing and Insurance (DRFI) framework, ensuring synergy between the two concepts.

Projects

- UNICEF: The Development of Sub-National Action Plans on Adaptive Social Protection (ASP) in Yogyakarta, East Nusa Tenggara, and West Nusa Tenggara
- UNICEF: Integration of ASP Financing Strategy into The DRFI Strategy and Considerations for The Ministry of Finance Regulation on Disaster Pooling Fund
- Bappenas: Background Study of RPJMN 2025-2029 and RPJPN 2025-2045
- Bappenas: Local Government Capacity Building Training for Adaptive Social Protection Schemes
- KONEKSI: Towards Future-Proof Society: Adaptive Social Protection Against Climate Change



Climate and Disaster Displacement

We have been making steady strides to advocate for the particular issue of the adverse impacts of disasters and the often neglected rights of displaced communities. Collaborating with several consortia, international organizations, and government institutions, we conduct projects and research to address this problem. In Indonesia and the Southeast Asia Region, policies on how to deal with climate change adaptation and migration have been implemented to some extent but remain suboptimal and desynchronized. Additionally, climate migration is a novel issue that is still poorly understood, making it difficult to create a policy that may address the facilitation of safe, orderly, and regular migration. Hence, the results of this collaborative project will be delivered and advocated to both key national and local government agencies in Indonesia as policy recommendations.

Projects

- Climate Displacement and Conflict Research in Indonesia, Vietnam, and the Philippines
- IOM - Envision Climate Human Mobility in Sub-national and National level of Indonesia
- GNDR - Making Displacement Safer

Publications

- Azhari, D., Sagala, S., Putra, M., Vicri, R.N., Krismiyaningsih, E. (2023). Towards a transdisciplinary understanding of Slow-onset Climate Impact on Human (Im)Mobility: Case Study: Demak and Indramayu, Northern Coast of Java, Indonesia [Paper presentation]. The Population-Environment Research Network (PERN) - Environmental and Climate Mobilities Network.
- Wibawa, I K.A., Ahmad, K.T., Azhari, D. (2023). Advancing Penta Helix Collaboration Approach Solution to Achieving the Resilience for Displaced Community, RDI Op-Ed, No. 1 (DCR) 20230224.



Global Health and Clean Air Development

We focus on promoting health safety for all through evidence-based research. Numerous national, regional, and global hazards pose threats to global health security, ultimately jeopardizing public health conditions and intensifying the risks associated with re-emerging infectious diseases, emerging infectious diseases, and non-communicable diseases. We recognize that the public health issue is of global and regional concern, not limited to one nation-state. Realizing this importance, we have been striving to support the realization of regional initiatives on the ASEAN Post-2015 Health Development Agendas (APHDA).

Projects

- C40 Cities: Jakarta Air Quality Monitoring Plan & Transport Analysis Project
- GRFCF: Factors Affecting Childhood Exposures to Urban Particulates (FACE-UP)

Publications

- Sagala, S., Azhari, D., Lutfiananda, F., Salsabiela, I. (2023). Spatial Pattern of COVID-19 Positivity Rates in Indonesia during Local Restriction Phase: A Case Study of Jakarta and Surabaya City (Book Title: The Role of GIS in COVID-19 Management and Control). Routledge (ISBN 9781032129754).
- Zahra, R.A., Wahid, W.W.C. (2023). Indonesia needs to triple its funding to control tuberculosis – here's where to start. The Conversation. <https://theconversation.com/indonesia-needs-to-triple-its-funding-to-control-tuberculosis-heres-where-to-start-212449>
- Bougenville, I., Zahra, A.R. (2023). Tuberculosis, The Disease of The Poor: How COVID-19 Worsens TB Social Determinants and Role of Community Health Workers in Solving It, RDI Op-Ed, No. 4 (CSWH) 20230419.
- Marshanda, N., Larasati, M. (2023). Battling Air Pollution in Jakarta: The Responsibility of All, RDI Op-Ed, No.6 (WWM) 20230706.



Sustainable Waste Management

In our commitment to sustainable waste management, we have actively engaged in diverse research projects and consultancy endeavors. Our initiatives span a wide spectrum, including addressing agricultural plastic waste challenges, developing innovative waste-to-energy mechanisms, formulating policy recommendations, conducting in-depth analyses of trash collection transport logistics, and gaining preliminary insights into waste management practices. Additionally, our efforts extend to assessing river waste flow and composition, providing foundational insights crucial for understanding waste management behaviors in the context of flood risk reduction.

Projects

- Optimization of Refuse-derived Fuels to Decarbonize Energy Sector and Achieve NDCs Targets in Indonesia (RDFact)
- iDE CSmart Cambodia: Agricultural Plastic Waste Validation Workshop
- NIES: Preliminary Study of Flood Waste in Ciliwung Riverside
- Tetra Tech CCBO: Trash Collection and Transportation Efficiency Analysis

Publications

- Sari, D.F., Larasati, M. (2023). Agricultural Plastic Film Mulch in Southeast Asia Region and Strategies to Mitigate the Associated Environmental Concerns: A Case Study in Cambodia, RDI Op-Ed, No. 2 (WWM) 20230324.



Other Sustainability and Resilience Studies and Projects

In addition to the mentioned projects and publications, our research institution, with a dedicated focus on sustainability and resilience sectors, has undertaken numerous endeavors across various topic areas. Some noteworthy achievements in these diverse domains include the following.

Projects

- AHA Centre: The ASEAN Standards and Certification for Experts in Disaster Management
- AHA Centre: The Sustainability Study on ASEAN Standards and Certification for Experts in Disaster Management
- Urban Studies Foundation Conference 2023: Conference on Overlooked Cities in Asia
- World Resource Institute: Sustainable Use of Peatland and Haze Mitigation in ASEAN (SUPA, Component 2)
- World Resource Institute: Urban Community Resilience Assessment (UCRA)

Publications

- Salsabilla, A.H., Swastika, A.B.D.P., Dewanto, R.H., Arisni, N.P., Putra, A.V., Nugroho, M.A., Goldant, V.G.F.G., Prakoso, M.R., Ibrahim, F.M., Wardhani, D.A., Wibowo, D.S., Benaga, P.M. (2023). Perbandingan Antara PLTS Terapung dan PLTA Serta Perkembangannya di Indonesia. RDI-SRE Special-Ed, WP No. 1 (REER) 20230912.
- Sagala, S., Azhari, D., Putra, M., Avila, B.E., Salsabiela, I. (2023). Local knowledge's roles for nature-based solutions as flood risk management (Book Title: Handbook of Flood Risk Management and Community Action: An International Perspective, 1st edition). Routledge.
- Mubarak, M.R., Nurhalizah, D., Samintang, Ahmad, R., Ampri, A.I.I. (2023) Index-based Insurance Through Village Fund Allocation as a Constructive Solution Towards Post-Disaster Agricultural Recovery for Vulnerable Farmers. RDI Policy Brief No. 5 (CEGF) 20230204.
- Lubis, M.R.K., Rizky, M., Utama, W.S. (2023). Connecting the Dots: How A National Intermediary Can Enable the Mobilization of Climate Finance in Indonesia. RDI Policy Brief No. 3 (CEGF) 20230201

RDI Knowledge Hub

RDI Knowledge Hub is a web-based knowledge management system that represents a culmination of our flagship projects, serving as a distinctive knowledge product outcome. It serves as a one-stop platform to find and explore RDI's core insights in resilience studies across Southeast Asia and the global context. Learn more on:

rdi.or.id/knowledge-hub/



Scan to check
our K-Hub



Waste to Energy and Circular Economy

Waste to Energy (WtE) serves as one of the renewable energy technology options amidst the growing global energy demand, which is still dominated by fossil fuel energy. Along with the clean energy transition process, the implementation of WtE also needs to consider circular economy principles to ensure both economic and environmental sustainability in its processes.

Clean Air Development

The Clean Air Development research focuses on addressing air pollution's environmental and ecological impact while concurrently enhancing air quality and integrating health considerations into air quality management. This holistic approach aims to create a sustainable framework for mitigating air pollution that protects human health and simultaneously fosters a cleaner and healthier environment and ecosystem.



Nature-Based Solutions

The current trajectory of climate change threatens the current recent to become more susceptible to hydrometeorological disaster risk. RDI outlined the prospects and challenges associated with the implementation of Nature-based Solutions (NbS) in Indonesia occurring in the aftermath of disasters that involve strategies for rebuilding more resiliently and reducing the risk of future disasters.

Disaster Risk Financing and Insurance (DRFI)



Disasters affect every state with multifaceted impacts, negatively affecting communities including causing financial losses. Disaster Risk Financing and Insurance (DRFI) program has emerged in response to the problem and to provide innovative financial protection to populations at risk.

Major Disaster Events



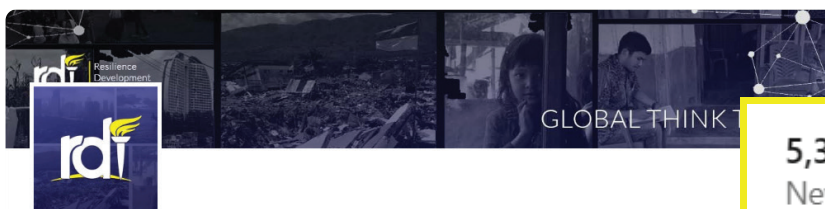
Many countries are exposed to disaster and climate change risks such as the Philippines, India, and Indonesia. However, risk awareness in many countries remains low resulting in far greater losses and damages. This K-HUB emerges to provide timely, comprehensive data on major disaster events happening worldwide to inform and provide lessons learned in resilience.

Social Media

Report



Resilience Development Initiative (RDI)



Resilience Development Initiative (RDI)

Global Think Tank

Research Services · Bandung, West Java · 10K followers · 51-200 employees

Message

Following



Home

My Company

About

Posts

Jobs

People

Follower highlights

10,302

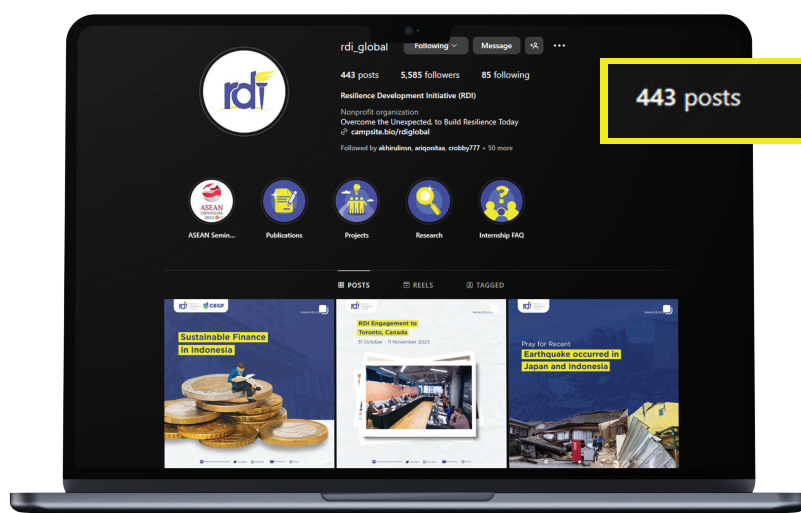
Total followers

5,351

New followers in the last 365 days



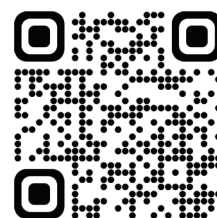
Scan to visit our
LinkedIn



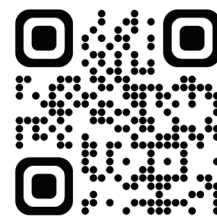
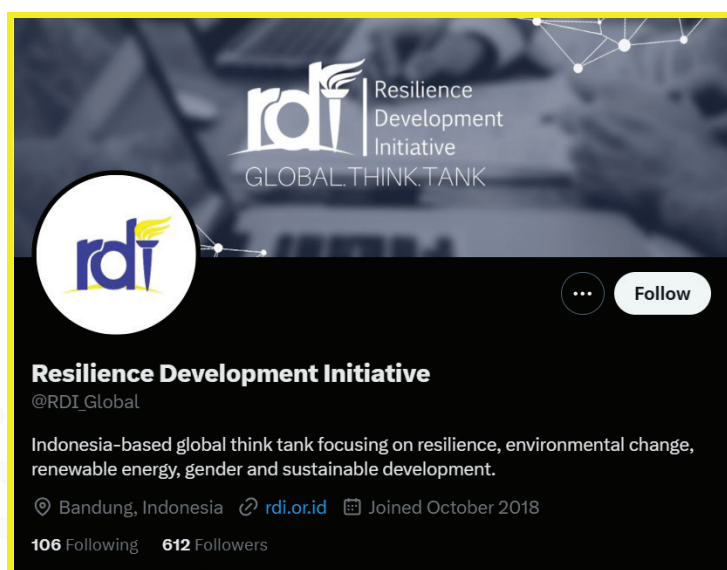
443 posts

5,585 followers

85 following



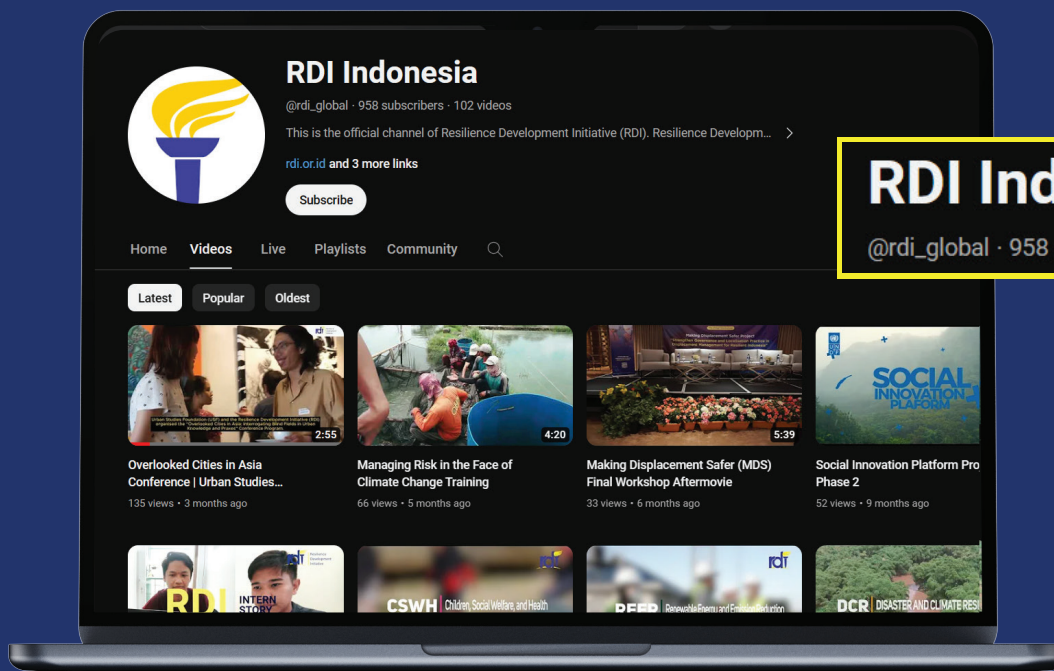
Scan to visit our
Instagram



Scan to visit our
Twitter



RDI Indonesia



RDI Indonesia

@rdi_global · 958 subscribers · 102 videos



Scan to visit our
Youtube



Resilience
Development
Initiative

In 2023, we embarked on a significant journey, making notable strides in our efforts to contribute to sustainable and resilient development in Indonesia, Southeast Asia, and globally. Our commitment to sustainability and resilience remains steadfast. This year, we eagerly anticipate expanding our collaborative efforts with the government, CSOs, think tanks and the private sector to enhance sustainability at the international level. Here's to a year of innovation, growth, and impactful collaborations.





Overcome the Unexpected, Build Resilience Today

Resilience Development Initiative
Jl. Sidomukti No.99E, Bandung City, Indonesia 40123
(+62) 22 253 6574
rdi@rdi.or.id